

Kentucky Audubon's Caws

Newsletter Insert of the Kentucky Audubon Council

Spring 2004

www.kentuckyaudubon.org

Nominating Committee's Slate of State Officers for 2004-2006

At the September 11th meeting of the Kentucky Audubon Council, the following slate of officers will be presented to the delegates for their consideration and vote:

President- James Cain of Buckley Hills Audubon Society in Lexington

Vice-President & Program Chair- Brenda Little of Daviess County

Treasurer- Bertha Timmel of Louisville

Secretary- Maggie Selvidge of Little River Audubon Society in Hopkinsville

Nominations may also be made from the floor. The officers who are elected this fall will serve through September of 2006.

Chapters send 1 to 4 delegates to the KAC meetings based on the number of members enrolled in their club. Each delegate has 1 vote. Chapters may vote by proxy if need be when their delegate is unable to attend in person.

Like Molasses in January

Nominations are not exactly pouring in for **Important Bird Areas (IBA's)** in Kentucky. Brenda Little is serving as coordinator and facilitator for the Technical Committee and has decided that it is going to take one-on-one contact with individuals at universities, colleges, governmental organizations and ornithological clubs to urge submission of the forms to the Technical Committee.

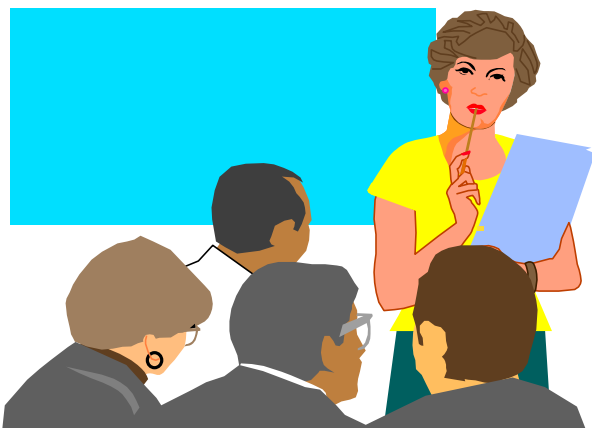
It is likely that the reason for the slow return process is that completing the forms is very tedious and time consuming. A fact of life in this day and time is that everyone is very busy. Especially busy are the people whom we need to complete the forms. One of the positive points about the IBA nomination process is that the people we are targeting with our request that they submit nominations are people who have the data readily at hand, are familiar with each site, and who are deeply concerned about the environment and welfare of birds.

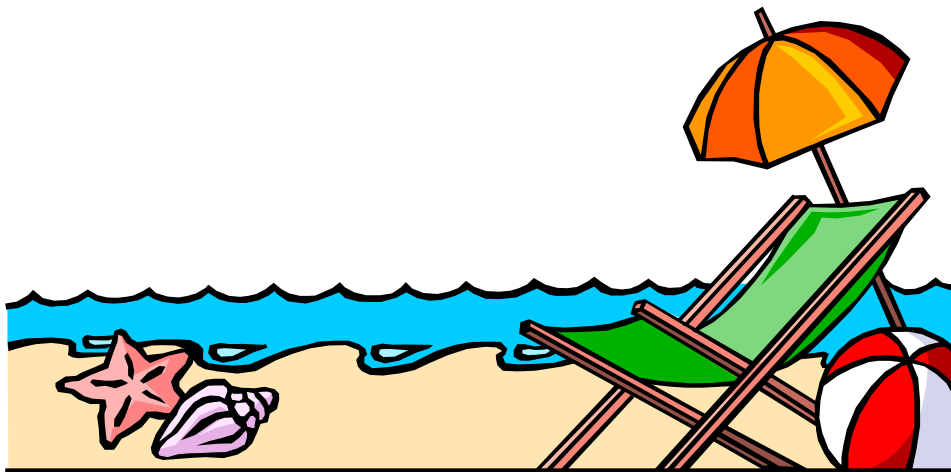
This slow process is expected to gain momentum when personal contact is made requesting nominations.

Audubon Y.E.S!

Youth Education Services They are like pure gold, now more than ever, our volunteers across the state who give of their time and talents to reach out to others sharing the excitement and joy of learning about our environment. The funding ax in Frankfort is draining the lifeblood from many programs and education is taking an enormous hit. [Editorial comment: *an unjustified portion of the funding cutbacks appear to be directed at the weakest and poorest among us where education is so important*]

When a chapter finds an **Education Chair** who is dynamic, energized, and challenged to help fill the void facing our citizens, especially the children, everybody wins, the children, the citizens, the community, ...every living-breathing thing. Let this be a call to every chapter; **Encourage, praise, recognize and support your Education Chair.** He or she is pure gold.





Summertime, Summertime, Sum, Sum, Summertime

Most chapters in Kentucky take a few months off during June, July and August each year. This is not a time when chapter leaders do nothing. Rather, during the summer months, annual reports are prepared for National Audubon Society and officers are sought to fill positions for the upcoming year or two. Also during this time of year, plans are made for programs, field trips, fundraisers, and educational outreach events that will take place from the fall of 2004 through spring of 2005. Some chapters have put in place a telephone tree and/or an email group so that they can quickly and easily make contact with members. There are times when a spur of the moment outing is dreamed up, something really special is sighted, or there is a local piece of news of concern to members that needs to be distributed. In this sense, the chapter's publicity chair does not get a break during the summer months. R&R, planning, even chillin' are part of the cycle.

The President Speaks of Sticky Fingers

Last year Gov. Paul Patton appointed me to serve on The Kentucky Heritage Land Conservation Fund board for a 3-year term. The fund's name is a mouth full and some of us just call it 'The Nature License Plate Fund'. Money comes to the Fund from the \$10 extra paid for a 'Nature Plate', plus fines levied against industrial polluters, and the unmined minerals tax. The board on which I serve accepts proposals from across the state, visits the site of each proposal, and decides how to invest the money in local communities to preserve parcels of land. Money from the KHLCF has come back to over 100 Kentucky counties and has preserved over 22, 000 acres to date.

With the recent budget shortfall, politicians are eyeing KHLCF's reserves to ease the budgetary crisis. The only reason there is any money in the fund is that the board meticulously examines every proposal and tract rather than spending money recklessly and in haste.

As the President of KAC, I urge each chapter

1. to educate your members about the KHLCF, the Nature Plate Fund
2. to urge your members to buy Nature Plates
3. to contact your state Senator to reiterate a recent Louisville Courier-Journal editorial opinion:

Kentucky should be fully funding education and the KHLCF rather than taking funds away from them. Both are vital to Kentucky's future quality of life.

Thanks, Bill

Questions? Comments! Suggestions....

Contact our Officers:

President **G. Wm. (Bill) Little, Jr. (270) 298-4237** xlavian@starband.net

Vice President **Jim Cain 2084 Williamsburg Road in Lexington, KY 40504 (859) 277-1711**

Secretary **Maggie Selvidge (270) 886-8078** selvidge@apex.net

Treasurer **Bertha Timmel (502) 893-5601** berthamtimmel@aol.com

Webmaster **Eric Williams** shrike@apex.net

Questions? Comments! Suggestions....

Contact our Officers:

President **G. Wm. (Bill) Little, Jr. (270) 298-4237**
xlavian@starband.net

Vice President **Jim Cain 2084 Williamsburg Road in Lexington, KY 40504 (859) 277-1711**

Secretary **Maggie Selvidge (270) 886-8078**
selvidge@apex.net

Treasurer **Bertha Timmel (502) 893-5601**
berthamtimmel@aol.com

Webmaster **Eric Williams shrike@apex.net**